



Power Chokes®

Automatic Back Pressure (ABP) System

Power Chokes® ABP system uses field-proven

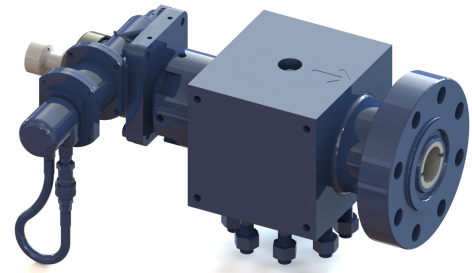
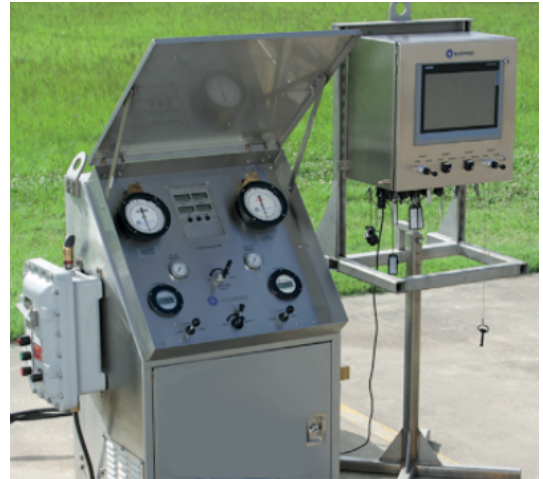
Power Chokes® technology and proprietary software for position, accuracy, stability, and reliability.

FEATURES

- Touch screen Human Machine Interface (HMI). Capable of mounting anywhere on the rig for complete control
- Drilling connection mode feature for maintaining a constant pressure profile on the reservoir
- Automatic Back Pressure (ABP) can be used with Power Chokes® 1" to 4" trim
- Integration to rig systems and well modeling software • Dual pressure sensor technology for safe operations
- Configurable with rig-up without the requirements for software updates
- Power Chokes® Pressure Relief Valve (PRV) system integration
- Electric and hydraulic actuation choke options
- Flowmeter integration for kick detection
- Permanent installation or portable system design options
- Patented Ramp tables available to automate drilling processes
- Manual or auto choke control

BENEFITS

- Faster connection time
- Reduces mud costs
- Mitigates and detects influxes and kicks
- Can increase the rate of penetration
- Fast response to system pressure fluctuations
- Accurate control over the entire flow range
- Extended drill equipment life (bit)
- Avoids well control issues
- Can reduce choke plugging during sand and debris producing wells
- Can manage surging and swab effects
- Training available for the end-user to work with the system on their own
- Field-proven technology since 2012 with an ethos of continuous improvement of the system
- Rig Integration Expertise



TECHNICAL SPECIFICATIONS

Automatic Back Pressure (ABP) system	ATEX, Zone 2	IECEX, US, and Canada, Zone 1 / class 1 division 1 available on request
Choke models	Size: 1-4" trim	
	API 6A & 16C Monogrammed	
	ABS, DNV type-approved, and PED	
	ATEX and IECEX, Zone 1	
	API 5,000 - 20,000 PSI	
	Electric or hydraulic actuation available	
Conforms to:	Hydraulic controls	Electric or hydraulic pump
		Designed for use in extreme high and low temperatures
		Blind panels, local gauge, push-button, and level control, and Human Machine Interface (HMI) control available
		Zone 1 certification
	Electric controls	Compact and low maintenance
		Minimum IP65
		Zone 1 certification
		Local and remote electrical controls available
Material information	Chokes - H2S service - NACE MR 0175	
	Application Programme Interface (API) material class up to EE-NL and temperature class PX	
	625 Inconel clad ring grooves and seal areas	
	Hydraulic Power Unit (HPU) and electric control panels 316 SS enclosure, NEMA 4X, IP65 ingress protection	

For further questions or quotation requests, contact PowerChokes-Sales@adsmpd.com.

Visit www.powerchokes.co for chokes, controls, and PRV solutions and www.adsmpd.com for RCDs and MPD solutions.

